

**Certificate of Analysis**  
**Compliance Test**



**CBD TALLOW BALM**  
Sample Matrix:  
HEMP  
Extract  
External



**Client Information:**  
**SUMMER SOLACE**  
**LLC**  
5507 SHATTUCK AVENUE  
OAKLAND, California  
94609

**Manufacturing Facility:**  
SUMMER SOLACE LLC  
5507 SHATTUCK AVENUE  
OAKLAND, California 94609  
Production Date: 2026-06-24

**Batch Data:**  
Lot Id: BAL-TRAUMA1  
Batch # BAL-TRAUMA1  
Batch Date: 2026-06-24  
Extracted From: GRASS-FED  
TALLOW

**Order Details:**  
Test Reg State: National  
COA Expiration  
Date: 07/02/2027

**Food Permits:**

**Order #**  
SUM260624-050001  
**Order Date:** 2026-06-24  
**Sample #** AAHU483

**Sampling Date:** 2026-06-27  
**Lab Batch Date:** 2026-06-27  
**Completion Date:** 2026-07-02

**Initial Gross Weight:** 115.200  
g  
**Volume:** 50 ml

**Net Weight per Package:**  
50000.000 mg  
**Sampling Method:**  
MSP 7.3.1

**Net Weight per Serving:**  
50000 mg  
**Servings Per Package:**  
1



Product Image



Staphylococcus Aureus  
**Passed**



**Potency**  
**Tested**



HHC Metals  
**Passed**



Mycotoxins  
**Passed**



Pesticides  
**Passed**



Residual Solvents  
**Passed**



Pathogenic Microbiology  
**Passed**



Listeria Monocytogenes  
**Passed**

**Potency Summary**

<b>Total THC</b>	<b>0.146%</b>	<b>Total CBD</b>	<b>0.807%</b>
per Serving	72.9 mg	per Serving	404 mg
per Package	72.9 mg	per Package	404 mg
<b>Total CBG</b>	<b>0.121%</b>	<b>Total CBN</b>	<b>&lt;LOQ</b>
per Serving	60.5 mg	per Serving	0.00 mg
per Package	60.5 mg	per Package	0.00 mg
<b>Total Cannabinoids</b>	<b>1.12%</b>	<b>Ratio CBD:THC</b>	<b>5.53:1</b>
per Serving	562 mg	per Serving	0.00 mg
per Package	562 mg	per Package	0.00 mg
<b>Total THC (AL)</b>	<b>0.158%</b>		
per Serving	79.0 mg		
per Package	79.0 mg		

*Aixia Sun*  
Aixia Sun Lab Director/Principal Scientist  
D.H.Sc., M.Sc., B.Sc., MT (AAB)



Definitions and Abbreviations used in this report: Total CBD = CBD + (CBD-A \* 0.877), Total CBDV = CBDV + (CBDVA \* 0.867), Total THC = (THCA + D8thca) \* 0.877 + Total (+/-) Delta 9 THC + Total (+/-) Delta-8 THC + delta 7-THCs + Delta(8)-iso-THC + Delta8-iso-THC + Delta6a10a-THC + Total Delta-10 THC + exo-THC + abnormal cbd, Total THCV = THCV + (THCVA \* 0.87), CBG Total = (CBGA \* 0.878) + CBG, CBN Total = (CBNA \* 0.876) + CBN, Total CBC = CBC + (CBCA \* 0.877), Total Cannabinoids = Total percentage of cannabinoids within the sample. (mg/ml) = Milligrams per Milliliter, LOQ = Limit of Quantitation, LOD = Limit of Detection, Dilution = Dilution Factor(ppb) = Parts per Billion, (%) = Percent, (cfu/g) = Colony Forming Unit per Gram, (cfu/g) = Colony Forming Unit per Gram, LOD = Limit of Detection, (µg/g) = Microgram per Gram(ppm) = Parts per Million, (ppm) = (µg/g), (aw) = Water Activity, (mg/Kg) = Milligram per Kilogram Pesticides indicators: 1=FL LOD/LOQ/AL; 2= CO LOD/LOQ/AL; 3= CO LOD/ACS CO LOQ, \* Measurement of Uncertainty for all test panels ≤15%

This report shall not be reproduced, without written approval, from ACS Laboratory. The results of this report relate only to the material or product analyzed. Test results are confidential unless explicitly waived otherwise. ACS Laboratory is accredited to the ISO/IEC 17025:2017 Standard. The tests and/or calibrations marked with an "\*" are not ISO/IEC 17025:2017 accredited test results. This facility meets the human health and food safety sanitation requirements of the Kentucky Cabinet for Health and Family Services as documented by KYCHFS. The current and valid permit number for the facility issued by a human health or food safety regulatory entity with authority over the facility is stated above, and that the facility meets the human health or food safety sanitation requirements of the regulatory entity as documented by the regulatory entity and evidenced by the valid permit number.

# Certificate of Analysis

## Compliance Test



**CBD TALLOW BALM**  
Sample Matrix:  
HEMP  
Extract  
External



**Client Information:**  
**SUMMER SOLACE**  
**LLC**  
5507 SHATTUCK AVENUE  
OAKLAND, California  
94609

**Manufacturing Facility:**  
SUMMER SOLACE LLC  
5507 SHATTUCK AVENUE  
OAKLAND, California 94609  
Production Date: 2026-06-24

**Batch Data:**  
Lot Id: BAL-TRAUMA1  
Batch #: BAL-TRAUMA1  
Batch Date: 2026-06-24  
Extracted From: GRASS-FED  
TALLOW

**Order Details:**  
Test Reg State: National  
COA Expiration  
Date: 07/02/2027

**Food Permits:**

Order #  
SUM260624-050001  
Order Date: 2026-06-24  
Sample # AAHU483

Sampling Date: 2026-06-27  
Lab Batch Date: 2026-06-27  
Completion Date: 2026-07-02

Initial Gross Weight: 115.200  
g  
Volume: 50 ml

Net Weight per Package:  
50000.000 mg  
Sampling Method:  
MSP 7.3.1

Net Weight per Serving:  
50000 mg  
Servings Per Package:  
1

**Potency 25 (LCUV)**  
Specimen Weight: 502.730 mg

**Tested**

SOP13.001 (LCUV)

Analyte	Dilution (1:n)	LOD (mg/g)	LOQ (%)	Result (mg/g)	(%)	Per Serving (mg)	Per Package (mg)
CBD	50.000	5.400000E-5	0.015	8.07	0.807	404	404
CBG	50.000	2.480000E-4	0.015	1.21	0.121	60.5	60.5
THCA-A	50.000	3.200000E-5	0.015	0.990	0.099	49.5	49.5
Delta-9 THC	50.000	1.300000E-5	0.015	0.590	0.059	29.5	29.5
CBC	50.000	1.800000E-5	0.015	0.370	0.037	18.5	18.5
CBCA	50.000	1.070000E-4	0.015	<LOQ	<LOQ	0.00	0.00
CBDA	50.000	1.000000E-5	0.015	<LOQ	<LOQ	0.00	0.00
CBDV	50.000	6.500000E-5	0.015	<LOQ	<LOQ	0.00	0.00
CBDVA	50.000	1.400000E-5	0.015	<LOQ	<LOQ	0.00	0.00
CBGA	50.000	8.000000E-5	0.015	<LOQ	<LOQ	0.00	0.00
CBL	50.000	3.500000E-5	0.015	<LOQ	<LOQ	0.00	0.00
CBN	50.000	1.400000E-5	0.015	<LOQ	<LOQ	0.00	0.00
CBNA	50.000	9.500000E-5	0.015	<LOQ	<LOQ	0.00	0.00
CBT	50.000	2.000000E-4	0.015	<LOQ	<LOQ	0.00	0.00
Delta-8 THC	50.000	2.600000E-5	0.015	<LOQ	<LOQ	0.00	0.00
Delta-8 THC-O Acetate	50.000	2.700000E-5	0.025	<LOQ	<LOQ	0.00	0.00
Delta-8 THCV	50.000	4.000000E-5	0.015	<LOQ	<LOQ	0.00	0.00
Delta-9 THC-O Acetate	50.000	7.700000E-5	0.025	<LOQ	<LOQ	0.00	0.00
Delta8-THCP	50.000	3.750000E-4	0.015	<LOQ	<LOQ	0.00	0.00
Delta9-THCP	50.000	1.170000E-5	0.012	<LOQ	<LOQ	0.00	0.00
Exo-THC	50.000	2.300000E-4	0.015	<LOQ	<LOQ	0.00	0.00
THCB	50.000	1.800000E-4	0.0163	<LOQ	<LOQ	0.00	0.00
THCH	50.000	3.500000E-4	0.0163	<LOQ	<LOQ	0.00	0.00
THCV	50.000	7.000000E-6	0.015	<LOQ	<LOQ	0.00	0.00
THCVA	50.000	4.700000E-5	0.015	<LOQ	<LOQ	0.00	0.00
Total CBD	50.000			8.07	0.807	404	404
Total THC	50.000		0.015	1.46	0.145823	72.9	72.9

*Aixia Sun*  
Aixia Sun Lab Director/Principal Scientist  
D.H.Sc., M.Sc., B.Sc., MT (AAB)

**Definitions are found on page 1**

This report shall not be reproduced, without written approval, from ACS Laboratory. The results of this report relate only to the material or product analyzed. Test results are confidential unless explicitly waived otherwise. ACS Laboratory is accredited to the ISO/IEC 17025:2017 Standard. The tests and/or calibrations marked with an "\*" are not ISO/IEC 17025:2017 accredited test results. This facility meets the human health and food safety sanitation requirements of the Kentucky Cabinet for Health and Family Services as documented by KYCHFS. The current and valid permit number for the facility issued by a human health or food safety regulatory entity with authority over the facility is stated above, and that the facility meets the human health or food safety sanitation requirements of the regulatory entity as documented by the regulatory entity and evidenced by the valid permit number.



**Certificate of Analysis**  
**Compliance Test**



**CBD TALLOW BALM**  
Sample Matrix:  
HEMP  
Extract  
External



**Client Information:**  
**SUMMER SOLACE**  
**LLC**  
5507 SHATTUCK AVENUE  
OAKLAND, California  
94609

**Manufacturing Facility:**  
SUMMER SOLACE LLC  
5507 SHATTUCK AVENUE  
OAKLAND, California 94609  
Production Date: 2026-06-24

**Batch Data:**  
Lot Id: BAL-TRAUMA1  
Batch #: BAL-TRAUMA1  
Batch Date: 2026-06-24  
Extracted From: GRASS-FED  
TALLOW

**Order Details:**  
Test Reg State: National  
COA Expiration  
Date: 07/02/2027

**Food Permits:**

**Order #**  
SUM260624-050001  
**Order Date:** 2026-06-24  
**Sample #** AAHU483

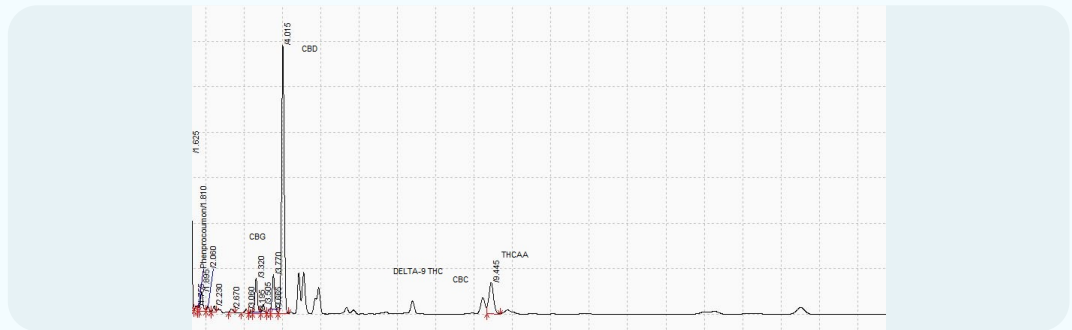
**Sampling Date:** 2026-06-27  
**Lab Batch Date:** 2026-06-27  
**Completion Date:** 2026-07-02

**Initial Gross Weight:** 115.200  
g  
**Volume:** 50 ml

**Net Weight per Package:**  
50000.000 mg  
**Sampling Method:**  
MSP 7.3.1

**Net Weight per Serving:**  
50000 mg  
**Servings Per Package:**  
1

Potency 25 (LCUV)



*Aixia Sun*  
Aixia Sun Lab Director/Principal Scientist  
D.H.Sc., M.Sc., B.Sc., MT (AAB)

Definitions are found on page 1

This report shall not be reproduced, without written approval, from ACS Laboratory. The results of this report relate only to the material or product analyzed. Test results are confidential unless explicitly waived otherwise. ACS Laboratory is accredited to the ISO/IEC 17025:2017 Standard. The tests and/or calibrations marked with an "\*" are not ISO/IEC 17025:2017 accredited test results. This facility meets the human health and food safety sanitation requirements of the Kentucky Cabinet for Health and Family Services as documented by KYCHFS. The current and valid permit number for the facility issued by a human health or food safety regulatory entity with authority over the facility is stated above, and that the facility meets the human health or food safety sanitization requirements of the regulatory entity as documented by the regulatory entity and evidenced by the valid permit number.



**Certificate of Analysis**  
**Compliance Test**



**CBD TALLOW BALM**  
Sample Matrix:  
HEMP  
Extract  
External



<b>Client Information:</b> <b>SUMMER SOLACE LLC</b> 5507 SHATTUCK AVENUE OAKLAND, California 94609	<b>Manufacturing Facility:</b> SUMMER SOLACE LLC 5507 SHATTUCK AVENUE OAKLAND, California 94609 Production Date: 2026-06-24	<b>Batch Data:</b> Lot Id: BAL-TRAUMA1 Batch # BAL-TRAUMA1 Batch Date: 2026-06-24 Extracted From: GRASS-FED TALLOW	<b>Order Details:</b> Test Reg State: National COA Expiration Date: 07/02/2027	<b>Food Permits:</b>
--	---	--	--	----------------------

<b>Order #</b> SUM260624-050001 <b>Order Date:</b> 2026-06-24 <b>Sample #</b> AAHU483	<b>Sampling Date:</b> 2026-06-27 <b>Lab Batch Date:</b> 2026-06-27 <b>Completion Date:</b> 2026-07-02	<b>Initial Gross Weight:</b> 115.200 g <b>Volume:</b> 50 ml	<b>Net Weight per Package:</b> 50000.000 mg <b>Sampling Method:</b> MSP 7.3.1	<b>Net Weight per Serving:</b> 50000 mg <b>Servings Per Package:</b> 1
--	---	--	--	---

<b>Staphylococcus Aureus</b> Specimen Weight: 270.600 mg Dilution Factor: 1.000 Analyte Staphylococcus aureus	<b>Passed</b> SOP13.029 (qPCR)
	Result Absence

<b>National Panel Listeria Monocytogenes</b> Specimen Weight: 1019.400 mg Dilution Factor: 1.000 Analyte Listeria Monocytogenes	<b>Passed</b> SOP13.032 (qPCR)
	Result Absence

<b>Pathogenic Microbiology SAE (MicroArray)</b> Specimen Weight: 1027.300 mg Dilution Factor: 1.000	<b>Passed</b> SOP13.019 (Micro Array)	
Analyte	Result (cfu/g)	Result (cfu/g)
Aspergillus flavus	Absence in 1g	Absence in 1g
Aspergillus fumigatus	Absence in 1g	Absence in 1g
Aspergillus niger	Absence in 1g	Absence in 1g
	Analyte	Result (cfu/g)
	Aspergillus terreus	Absence in 1g
	Salmonella	Absence in 1g
	STEC E. Coli	Absence in 1g

*Aixia Sun*  
Aixia Sun Lab Director/Principal Scientist  
D.H.Sc., M.Sc., B.Sc., MT (AAB)



**Definitions are found on page 1**  
This report shall not be reproduced, without written approval, from ACS Laboratory. The results of this report relate only to the material or product analyzed. Test results are confidential unless explicitly waived otherwise. ACS Laboratory is accredited to the ISO/IEC 17025:2017 Standard. The tests and/or calibrations marked with an "\*" are not ISO/IEC 17025:2017 accredited test results. This facility meets the human health and food safety sanitation requirements of the Kentucky Cabinet for Health and Family Services as documented by KYCHFS. The current and valid permit number for the facility issued by a human health or food safety regulatory entity with authority over the facility is stated above, and that the facility meets the human health or food safety sanitation requirements of the regulatory entity as documented by the regulatory entity and evidenced by the valid permit number.

**Certificate of Analysis**  
**Compliance Test**



<b>Client Information:</b> <b>SUMMER SOLACE LLC</b> 5507 SHATTUCK AVENUE OAKLAND, California 94609	<b>Manufacturing Facility:</b> SUMMER SOLACE LLC 5507 SHATTUCK AVENUE OAKLAND, California 94609 Production Date: 2026-06-24	<b>Batch Data:</b> Lot Id: BAL-TRAUMA1 Batch # BAL-TRAUMA1 Batch Date: 2026-06-24 Extracted From: GRASS-FED TALLOW	<b>Order Details:</b> Test Reg State: National COA Expiration Date: 07/02/2027	<b>Food Permits:</b>
--	---	--	--	----------------------

<b>Order #</b> SUM260624-050001 <b>Order Date:</b> 2026-06-24 <b>Sample #</b> AAHU483	<b>Sampling Date:</b> 2026-06-27 <b>Lab Batch Date:</b> 2026-06-27 <b>Completion Date:</b> 2026-07-02	<b>Initial Gross Weight:</b> 115.200 g <b>Volume:</b> 50 ml	<b>Net Weight per Package:</b> 50000.000 mg <b>Sampling Method:</b> MSP 7.3.1	<b>Net Weight per Serving:</b> 50000 mg <b>Servings Per Package:</b> 1
---	---	--	--	---

**Mycotoxins** **Passed**  
SOP13.059 (LCMS)

Specimen Weight: 591.000 mg

Dilution Factor: 2.540

Analyte	LOD (ppb)	LOQ (ppb)	Action Level (ppb)	Result (ppb)	Analyte	LOD (ppb)	LOQ (ppb)	Action Level (ppb)	Result (ppb)
Aflatoxin B1	0.304	6	20	<LOQ	Aflatoxin G2	0.271	6	20	<LOQ
Aflatoxin B2	0.077	6	20	<LOQ	Ochratoxin A	0.754	3.8	20	<LOQ
Aflatoxin G1	0.304	6	20	<LOQ					

**HHC Metals** **Passed**  
SOP13.051 (ICP-3; icp-1)

Specimen Weight: 253.000 mg

Dilution Factor: 197.628

Analyte	LOD (ppb)	LOQ (ppb)	Action Level (ppb)	Result (ppb)	Analyte	LOD (ppb)	LOQ (ppb)	Action Level (ppb)	Result (ppb)
Arsenic (As)	0.019	100	200	<LOQ	Nickel (Ni)	0.150	250	500	<LOQ
Cadmium (Cd)	0.004	100	200	<LOQ	Palladium (Pd)	0.007	50	100	<LOQ
Lead (Pb)	0.010	100	500	<LOQ	Platinum (Pt)	0.013	50	100	<LOQ
Mercury (Hg)	0.044	100	200	<LOQ	Zinc (Zn)	0.410	1000	na	37600

**Residual Solvents - FL (CBD)** **Passed**  
SOP13.056,SOP13.039 (GCMS-HS),GCMS-HS)

Specimen Weight: 50.300 mg

Dilution Factor: 1.000

Analyte	LOD (ppm)	LOQ (ppm)	Action Level (ppm)	Result (ppm)	Analyte	LOD (ppm)	LOQ (ppm)	Action Level (ppm)	Result (ppm)
1,1-Dichloroethene	0.009	0.16	8	<LOQ	Heptane	0.001	1.39	5000	<LOQ
1,2-Dichloroethane	0.000	0.04	2	<LOQ	Hexane	0.068	1.17	290	<LOQ
Acetone	0.015	2.08	5000	<LOQ	Isopropyl alcohol	0.005	1.39	500	<LOQ
Acetonitrile	0.060	1.17	410	<LOQ	Methanol	0.001	0.69	3000	<LOQ
Benzene	0.000	0.02	2	<LOQ	Methylene chloride	0.003	2.43	600	<LOQ
Butanes	0.417	2.5	2000	<LOQ	Pentane	0.037	2.08	5000	<LOQ
Chloroform	0.000	0.04	60	<LOQ	Propane	0.031	5.83	2100	<LOQ
Ethanol	0.002	2.78	5000	<LOQ	Toluene	0.001	2.92	890	<LOQ
Ethyl Acetate	0.001	1.11	5000	<LOQ	Total Xylenes	0.000	2.92	2170	<LOQ
Ethyl Ether	0.005	1.39	5000	<LOQ	Trichloroethylene	0.001	0.49	80	<LOQ
Ethylene Oxide	0.004	0.1	5	<LOQ					

*Aixia Sun*  
Aixia Sun Lab Director/Principal Scientist  
D.H.Sc., M.Sc., B.Sc., MT (AAB)

**Definitions are found on page 1**

This report shall not be reproduced, without written approval, from ACS Laboratory. The results of this report relate only to the material or product analyzed. Test results are confidential unless explicitly waived otherwise. ACS Laboratory is accredited to the ISO/IEC 17025:2017 Standard. The tests and/or calibrations marked with an "\*" are not ISO/IEC 17025:2017 accredited test results. This facility meets the human health and food safety sanitation requirements of the Kentucky Cabinet for Health and Family Services as documented by KYCHFS. The current and valid permit number for the facility issued by a human health or food safety regulatory entity with authority over the facility is stated above, and that the facility meets the human health or food safety sanitization requirements of the regulatory entity as documented by the regulatory entity and evidenced by the valid permit number.



**Certificate of Analysis**  
**Compliance Test**



**CBD TALLOW BALM**  
Sample Matrix:  
HEMP  
Extract  
External



**Client Information:**  
**SUMMER SOLACE**  
**LLC**  
5507 SHATTUCK AVENUE  
OAKLAND, California  
94609

**Manufacturing Facility:**  
SUMMER SOLACE LLC  
5507 SHATTUCK AVENUE  
OAKLAND, California 94609  
Production Date: 2026-06-24

**Batch Data:**  
Lot Id: BAL-TRAUMA1  
Batch # BAL-TRAUMA1  
Batch Date: 2026-06-24  
Extracted From: GRASS-FED  
TALLOW

**Order Details:**  
Test Reg State: National  
COA Expiration  
Date: 07/02/2027

**Food Permits:**

**Order #**  
SUM260624-050001  
**Order Date:** 2026-06-24  
**Sample #** AAHU483

**Sampling Date:** 2026-06-27  
**Lab Batch Date:** 2026-06-27  
**Completion Date:** 2026-07-02

**Initial Gross Weight:** 115.200  
g  
**Volume:** 50 ml

**Net Weight per Package:**  
50000.000 mg  
**Sampling Method:**  
MSP 7.3.1

**Net Weight per Serving:**  
50000 mg  
**Servings Per Package:**  
1

**Pesticides**

Specimen Weight: 591.000 mg

**Passed**

SOP13.059 (LCMS)

Dilution Factor: 2.540

Analyte	LOD (ppb)	LOQ (ppb)	Action Level (ppb)	Result (ppb)	Analyte	LOD (ppb)	LOQ (ppb)	Action Level (ppb)	Result (ppb)
Abamectin	0.399	23.3	300	<LOQ	Fludioxonil	0.360	24.8	3000	<LOQ
Acephate	0.141	24.8	3000	<LOQ	Hexythiazox	0.113	24.8	2000	<LOQ
Acequinocyl	2.178	24.8	2000	<LOQ	Imazalil	0.258	24.8	100	<LOQ
Acetamiprid	0.140	24.8	3000	<LOQ	Imidacloprid	0.402	24.8	3000	<LOQ
Aldicarb	0.203	24.8	100	<LOQ	Kresoxim Methyl	0.182	24.8	1000	<LOQ
Azoxystrobin	0.188	24.8	3000	<LOQ	Malathion	0.223	24.8	2000	<LOQ
Bifenazate	0.086	24.8	3000	<LOQ	Metaxalyl	0.270	24.8	3000	<LOQ
Bifenthrin	0.100	24.8	500	<LOQ	Methiocarb	0.118	24.8	100	<LOQ
Boscalid	0.595	24.8	3000	<LOQ	Methomyl	0.064	24.8	100	<LOQ
Captan	1.850	323	3000	<LOQ	methyl-Parathion	0.820	24.8	100	<LOQ
Carbaryl	0.122	24.8	500	<LOQ	Mevinphos	0.093	24.8	100	<LOQ
Carbofuran	0.086	24.8	100	<LOQ	Myclobutanil	0.573	24.8	3000	<LOQ
Chlorantraniliprole	0.084	24.8	3000	<LOQ	Naled	0.069	24.8	500	<LOQ
Chlordane	1.410	24.8	100	<LOQ	Oxamyl	0.041	24.8	500	<LOQ
Chlorfenapyr	1.500	24.8	100	<LOQ	Paclobutrazol	0.186	24.8	100	<LOQ
Chlormequat Chloride	0.205	24.8	3000	<LOQ	Pentachloronitrobenzene	0.220	24.8	200	<LOQ
Chlorpyrifos	0.109	24.8	100	<LOQ	Permethrin	0.624	24.8	1000	<LOQ
Clofentazine	0.212	24.8	500	<LOQ	Phosmet	0.127	24.8	200	<LOQ
Coumaphos	0.206	24.8	100	<LOQ	Piperonylbutoxide	0.149	24.8	3000	<LOQ
Cyfluthrin	0.980	24.8	1000	<LOQ	Prallethrin	1.476	24.8	400	<LOQ
Cypermethrin	0.985	24.8	1000	<LOQ	Propiconazole	0.294	24.8	1000	<LOQ
Daminozide	1.655	24.8	100	<LOQ	Propoxur	0.100	24.8	100	<LOQ
Diazinon	0.212	24.8	200	<LOQ	Pyrethrins	0.067	12.9	1000	<LOQ
Dichlorvos	1.130	24.8	100	<LOQ	Pyridaben	0.140	24.8	3000	<LOQ
Dimethoate	0.063	24.8	100	<LOQ	Spinetoram	0.424	24.8	3000	<LOQ
Dimethomorph	2.581	24.8	3000	<LOQ	Spinosad	0.028	24.8	3000	<LOQ
Ethoprophos	0.151	24.8	100	<LOQ	Spiromesifen	0.120	24.8	3000	<LOQ
Etofenprox	0.172	24.8	100	<LOQ	Spirotetramat	0.211	24.8	3000	<LOQ
Etoxazole	0.866	24.8	1500	<LOQ	Spiroxamine	0.533	24.8	100	<LOQ
Fenhexamid	0.588	24.8	3000	<LOQ	Tebuconazole	0.230	24.8	1000	<LOQ
Fenoxycarb	0.274	24.8	100	<LOQ	Thiacloprid	0.170	24.8	100	<LOQ
Fenpyroximate	0.198	24.8	2000	<LOQ	Thiamethoxam	0.179	24.8	1000	<LOQ
Fipronil	0.317	24.8	100	<LOQ	Trifloxystrobin	0.134	24.8	3000	<LOQ
Fonicamid	0.466	24.8	2000	<LOQ					

*Aixia Sun*  
Aixia Sun Lab Director/Principal Scientist  
D.H.Sc., M.Sc., B.Sc., MT (AAB)

**Definitions are found on page 1**

This report shall not be reproduced, without written approval, from ACS Laboratory. The results of this report relate only to the material or product analyzed. Test results are confidential unless explicitly waived otherwise. ACS Laboratory is accredited to the ISO/IEC 17025:2017 Standard. The tests and/or calibrations marked with an "\*" are not ISO/IEC 17025:2017 accredited test results. This facility meets the human health and food safety sanitation requirements of the Kentucky Cabinet for Health and Family Services as documented by KYCHFS. The current and valid permit number for the facility issued by a human health or food safety regulatory entity with authority over the facility is stated above, and that the facility meets the human health or food safety sanitation requirements of the regulatory entity as documented by the regulatory entity and evidenced by the valid permit number.



**Certificate of Analysis**  
**Compliance Test**



**CBD TALLOW BALM**  
Sample Matrix:  
HEMP  
Extract  
External



**Client Information:**  
**SUMMER SOLACE**  
**LLC**  
5507 SHATTUCK AVENUE  
OAKLAND, California  
94609

**Manufacturing Facility:**  
SUMMER SOLACE LLC  
5507 SHATTUCK AVENUE  
OAKLAND, California 94609  
Production Date: 2026-06-24

**Batch Data:**  
Lot Id: BAL-TRAUMA1  
Batch # BAL-TRAUMA1  
Batch Date: 2026-06-24  
Extracted From: GRASS-FED  
TALLOW

**Order Details:**  
Test Reg State: National  
COA Expiration  
Date: 07/02/2027

**Food Permits:**

**Order #**  
SUM260624-050001  
**Order Date:** 2026-06-24  
**Sample #** AAHU483

**Sampling Date:** 2026-06-27  
**Lab Batch Date:** 2026-06-27  
**Completion Date:** 2026-07-02

**Initial Gross Weight:** 115.200  
g  
**Volume:** 50 ml

**Net Weight per Package:**  
50000.000 mg  
**Sampling Method:**  
MSP 7.3.1

**Net Weight per Serving:**  
50000 mg  
**Servings Per Package:**  
1

**Potency 25 (LCUV) at Dry Weight**  
Specimen Weight: 502.730 mg

**Tested**  
SOP13.001 (LCUV)

Dilution Factor: 500.000

Analyte	Dilution (1:n)	LOD (mg/g)	LOQ (%)	Result (mg/g)	(%)	Analyte	Dilution (1:n)	LOD (mg/g)	LOQ (%)	Result (mg/g)	(%)
CBD	50.000	0.000	0.015	8.07	0.807	Delta-8 THC	50.000	0.000	0.015	<LOQ	<LOQ
CBG	50.000	0.000	0.015	1.21	0.121	Delta-8 THC-O Acetate	50.000	0.000	0.025	<LOQ	<LOQ
THCA-A	50.000	0.000	0.015	0.990	0.0990	Delta-8 THCV	50.000	0.000	0.015	<LOQ	<LOQ
Delta-9 THC	50.000	0.000	0.015	0.590	0.0590	Delta-9 THC-O Acetate	50.000	0.000	0.025	<LOQ	<LOQ
CBC	50.000	0.000	0.015	0.370	0.0370	Delta8-THCP	50.000	0.000	0.015	<LOQ	<LOQ
CBCA	50.000	0.000	0.015	<LOQ	<LOQ	Delta9-THCP	50.000	0.000	0.012	<LOQ	<LOQ
CBDA	50.000	0.000	0.015	<LOQ	<LOQ	Exo-THC	50.000	0.000	0.015	<LOQ	<LOQ
CBDV	50.000	0.000	0.015	<LOQ	<LOQ	THCB	50.000	0.000	0.0163	<LOQ	<LOQ
CBDVA	50.000	0.000	0.015	<LOQ	<LOQ	THCH	50.000	0.000	0.0163	<LOQ	<LOQ
CBGA	50.000	0.000	0.015	<LOQ	<LOQ	THCV	50.000	0.000	0.015	<LOQ	<LOQ
CBL	50.000	0.000	0.015	<LOQ	<LOQ	THCVA	50.000	0.000	0.015	<LOQ	<LOQ
CBN	50.000	0.000	0.015	<LOQ	<LOQ	Total Active CBD	50.000			8.07	0.807
CBNA	50.000	0.000	0.015	<LOQ	<LOQ	Total Active THC	50.000			1.46	0.146
CBT	50.000	0.000	0.015	<LOQ	<LOQ						

*Aixia Sun*  
Aixia Sun Lab Director/Principal Scientist  
D.H.Sc., M.Sc., B.Sc., MT (AAB)

**Definitions are found on page 1**

This report shall not be reproduced, without written approval, from ACS Laboratory. The results of this report relate only to the material or product analyzed. Test results are confidential unless explicitly waived otherwise. ACS Laboratory is accredited to the ISO/IEC 17025:2017 Standard. The tests and/or calibrations marked with an "\*" are not ISO/IEC 17025:2017 accredited test results. This facility meets the human health and food safety sanitation requirements of the Kentucky Cabinet for Health and Family Services as documented by KYCHFS. The current and valid permit number for the facility issued by a human health or food safety regulatory entity with authority over the facility is stated above, and that the facility meets the human health or food safety sanitization requirements of the regulatory entity as documented by the regulatory entity and evidenced by the valid permit number.

